



GerSpool

Task management for document production

Produce more, by controlling all processing stages via Web, and expedite your customers' demands.

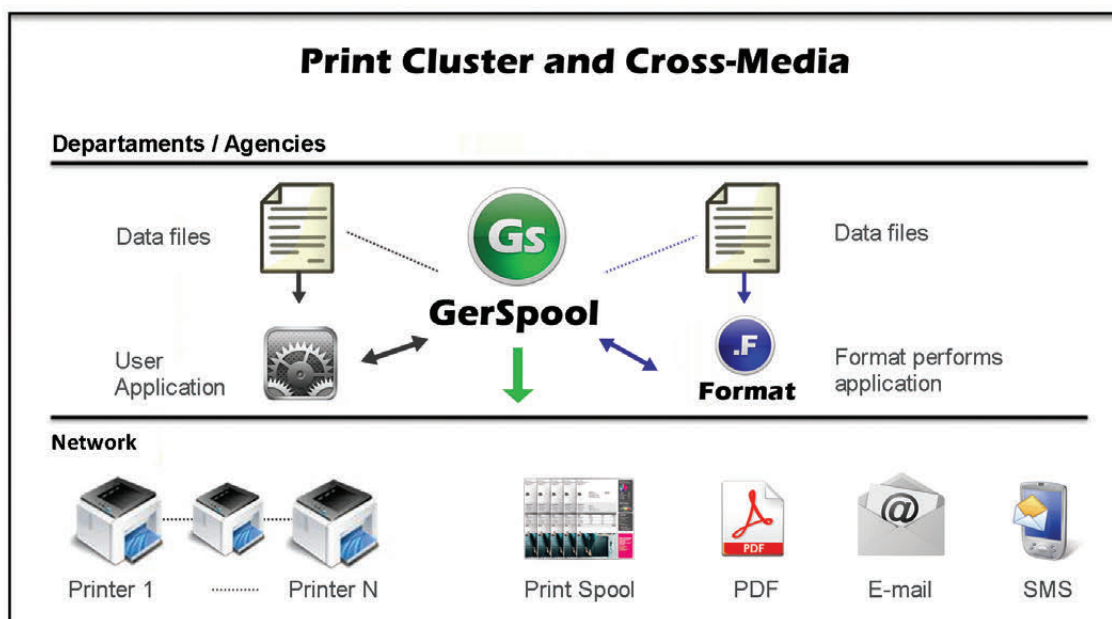
GerSpool is a **tool developed by Sirius to manage process queues for printing**, in local and network printers, **or generating image files.**

Via command line, GerSpool can activate the software **Format** or any other application developed by the user.

This product consists of two mod

- **GerSpool Server** - task executor module (Windows service).
- **GerSpool Client** - web module that sets tasks and monitors the processes.

GerSpool **enables processing files in queues previously** set by the user, **in order to generate print pool files** in PCL, PostScript, Xerox Metacode, AFP, IPDS **and also image files** in GIF, in JPG e PDF.

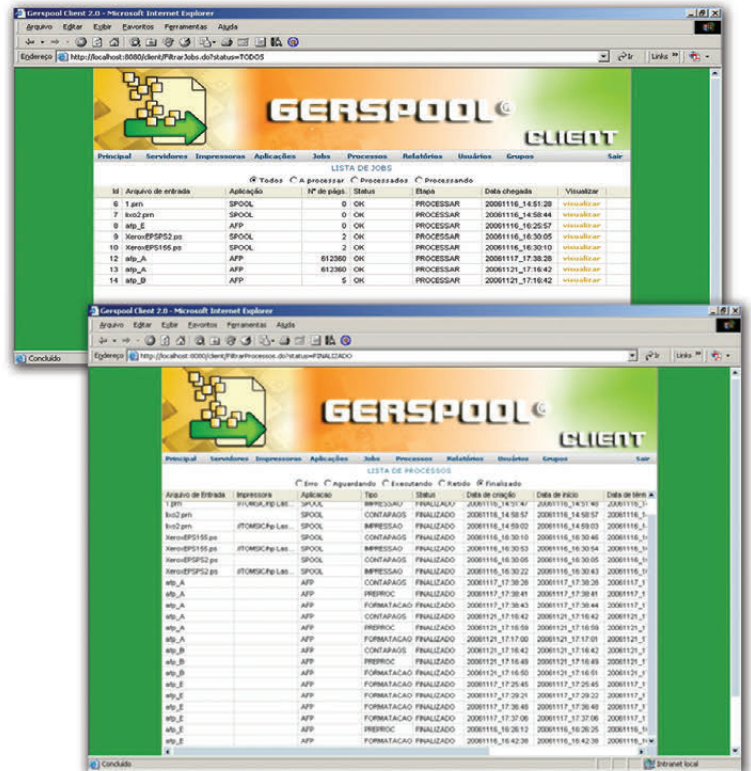


How does GerSpool work?

In GerSpool, all requests are registered in a single working environment, to allow viewing the demands, setting priorities and monitoring the implementation of the tasks.

Key Features:

- Actives **processing tasks** and programs in background, via parameters;
- **Creates profiles** or user groups;
- Generates print **spool files**;
- Prints documents on any local or network printer by using the Windows spooler or by connecting directly to the printer via socket (TCP/IP);
- Generates document images in JPG, GIF or PDF by using **Format**;
- Lets you encrypt files;
- Allows to retain/release/delete print jobs;
- Generates LOG of transactions and **account pages** generated with reporting;
- Move print jobs from a queue to another one and sets priorities among them;
- Redirects on demand printing in case of printer failure;
- Controls in real time the status of printers by using the SNMP protocol;
- Previews formatted documents;
- Reprints documents selectively and resumes printing in case of interruption;
- Splits files;
- Web-based Client stations can control multiple servers allowing the processing of multiple tasks;
- Distributes large print volumes between different printers;



For further information, call us on +55 (21) 3392 2013 / (11) 5096 5001, or visit our website www.sirius.co

